

LOGISTICS AND HOST NATION SUPPORT

Table of contents

Appendix 1	-	Materiel and services
Appendix 2	-	Transport and movement
Appendix 3	-	Hygiene and veterinary support
Appendix 4	-	Personnel
Appendix 5	-	Damage control
Appendix 6	-	Engineering and Topographic engineering
Tab A	-	Engineering
Tab B	-	Topographic Engineering
Appendix 7	-	Chain of Command - Logistics Support and requests

References:

- A Exercise Specification (EXSPEC) Nordic Peace 98
- B SOP Nordic Peace 98
- C Memorandum of Understanding (MOU) between The Kingdom of Sweden and Sending Nations concerning legal status, logistic support, financial and other responsibilities during the exercise Nordic Peace 1998
- D Technical Arrangement (TA) relevant to the MOU.

1 General

The aim of this annex is to detail the administrative regulations and logistics support, including Host Nation Support (HNS), that will be provided to land, naval and air forces and civilian organisations exercising in Sweden during Nordic Peace 98.

2 Deployment Instruction

Participating nations are required to submit diplomatic clearance requests for aircrafts and ships entering Swedish territory.

On receipt of deployment information CINC CJC will make the necessary arrangements with the state authorities for the entry of the foreign forces into Sweden.

3 Logistics Support Concept

Participating forces, units, teams, elements, DISTAFF, VOB and PIC will be supported directly by logistics units through SWEDINT and MKG as well as by central Air Command (FKM) and Eastern Naval Command (MKO).

Chain of command - see appendix 7.

Additionally a limited support unit will be attached to the military units - if needed - during the LIVEX.

As a principle HNS will be provided by the host nation on a cost reimbursable basis for any support where real costs are incurred. In cases where the provision of HNS, particularly in the area of services, produces no incremental costs to the host nation, this support will be provided to participating nations free of charge. Detailed breakdown of which items are reimbursable and those which are free of charge are included in MOU and TA.

Spare parts to organic materiel, not available in Sweden, have to be brought by the national units themselves.

4 Logistics Support Units

The following installations will support the participating units:

Swedish Armed Forces International Command (SWEDINT)	Training period
Almnäs Technical Workshop (MV Sdt)	"-
Svea Life Guards (I 1/Fo 44)	"-
Södermanland Regiment (P 10/Fo 43)	Training and exercise periods
Uppland Regiment (S 1/Fo 47)	"-
Gotland Military Command (MKG)	Exercise period
Central Logistic Regiment (Uhreg M)	Training and exercise periods
Gotland Logistics Group (Uhgrp G)	Exercise period
Visby Technical Workshop (MV Vby)	"-
Central Air Command (FKM)	Training and exercise periods
Skavsta Airport	"-
Uppland Wing at Visby Airport (F 16 G)	Exercise period
Eastern Naval Command (MKO)	Training and exercise periods
Gotland Coast Artillery Regiment (KA 3)	Exercise period

5 Additional (new) unit/team-information and HNS-requests

21 August 1998

Page 3 (3)

Earlier all participating units, teams and organizations have been requested to complete a Planning Questionnaire, provided by Project Group NP 98, and to send this document (consisting of *unit-/team-information* and *requests of Host Nation Support*) to CJC.

If an organisation/unit, of different reasons, have *changed organisation* and/or have found out *additional needs of support*, please provide this *new information* and/or *requests (including figures)* as a p - to give the best possible conditions in planning for the HNS - and enabling HNS to provide an efficient support.

MATERIEL AND SERVICES**1 Class I - Rations**

- a) The participating forces (except Air units) and civilian organisations will, during the training period (phase 3), be supported by the military restaurant at SWEDINT.
- b) During the LIVEX period (phase 5) the participating units (except Air units) and civilian organisations will be supported by MKG.
- c) Air units will be supported by FKM (through P 10/Fo 43 with civilian resources) at Skavsta airport and by FKM at Visby airport.
- d) Maritime Component will be supported by MKO, SWEDINT and MKG.
- e) Umpires will be supported by the units to which they are attached (including drivers, radio operators and medics).
- f) A canteen will be located at Almnäs garrison, available during the training period (phase 3),
- g) Mobile canteens will serve all units during the LIVEX (phase 5), as coordinated by MKG,
- h) FINCOY will bring their own mobile canteen.

2 Class II and IV - Equipment and defence stores

- a) The Danish, Finnish, Norwegian, and Swedish army units will bring their organic equipment. The Estonian, Latvian and Lithuanian army units will bring organic equipment except vehicles. Naval and Air Force units from all participating nations will be equipped by Sending Nations. Additional provision of equipment and supplies according to MOU by the Host Nation.

Storing facilities will be provided by SWEDINT and MKG.

- b) All supply installations at both SWEDINT and MKG will be open daily.
- c) All Class II/IV items will be issued according to MOU.

3 Class III - Petrol, Oil and Lubricants (POL)

a) POL: qualities available and approved by Swedish military authorities are:

- petrol, 95- and 98-octane unleaded,
- additives (potassium - K-) in order to replace lead (Pb) in unleaded petrol,
- diesoline in the quality "environmental class 1" (in Swedish "miljöklass 1"),

b) POL: Participating forces will be supported by fuel tankers, fixed military installations and designated civilian installations in accordance with MOU.

c) The support of aviation fuel and POL is regulated in EXOPORD, Appendix 4 to Annex G.

d) POL: J-staff, DISTAFF, VOB and PIC duty vehicles, including rental cars, will refuel at fixed military and designated civilian installations.

4 Class V - Ammunition

a) NO LIVE AMMUNITION IS TO BE BROUGHT INTO THE EXERCISE.
--

b) Participating units will bring blank ammunition and pyrotechnics for their own use.

NOTA BENE! Ammunition and weapons may for safety reasons not to be exchanged between different national units.

c) Storing facilities will be provided by SWEDINT and MKG.

d) Thunder flash and pyrotechnics for umpires will be issued by SWEDINT and MKG.

5 Maintenance

All forces will be supported with repair, recovery support and spare parts by a HNS-unit. The workshops available will have the capacity to carry out repair and recovery of most types of vehicles, APC, signal equipment, weapons and engineering equipment.

Maintenance for ships or vehicles not available as Swedish organic material could be carried out to a limited extent.

Maintenance for aircrafts is regulated in EXOPORD, Appendix 4 to Annex G.

Repair and recovery support during the movement to Almnäs and from the exercise will be managed through by the Swedish liaison officer. The units will be supported by Almnäs Technical Workshop, Visby Technical Workshop and KA 3.

6 Medical support

NO PLAY medical support

a) Principles

All participants will have free daily medical care for minor emergency problems by HNS in their ordinary military medical organisation according to the MOU.

Major trauma and severe illness will be taken care of through the civilian ambulance organisation and by civilian hospitals.

b) Aim

The medical reception at SWEDINT and MKG will be open daily. Consulting-time 0730-1030 am. There will however be a doctor on duty 24 hours a day.

During LIVEX week some of the daily medical care for the military units will be taken care of by the Battalion Aid Stations.

IN EMERGENCY SITUATIONS AND DISTRESS DIAL 112 FOR AMBULANCE, FIRE BRIGADE OR POLICE.

c) Hospitalisation

Patients suffering from sickness, who not require hospital treatment, but who are not able to fulfil their duties within the unit, will be admitted to a recovery camp by HNS-units.

Patients who need hospitalisation and emergency medical treatment at civilian hospitals will be treated according to international agreements and MOU.

Military medical facilities:

SWEDINT medical reception	Almnäs	Phone 08-553 011 47
Recovery camp at barrack 213	Almnäs	Phone TBA
Wisborgslätt Military Hospital	MKG	Phone TBA
Recovery camp at barrack	MKG	Phone TBA

Civilian Hospitals:

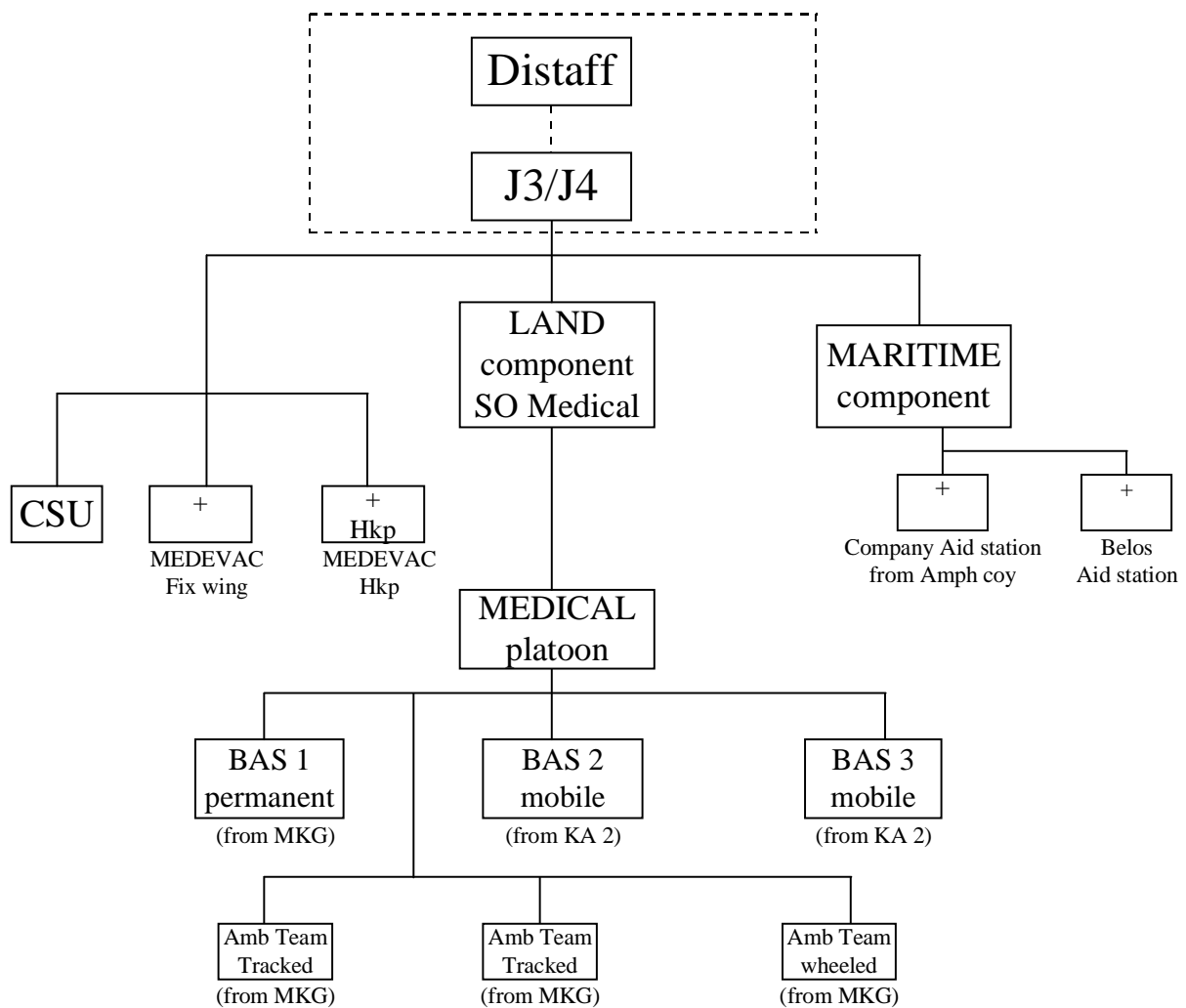
Södertälje Hospital	Södertälje	Phone 08-550 240 00
Huddinge Hospital	Huddinge	Phone 08-746 10 00
Karolinska Hospital	Stockholm	Phone 08-729 20 00
Visby Hospital	Visby	Phone 0498-26 80 00

d) Evacuation

Evacuation to home country after emergency medical treatment and hospitalisation at a civilian hospital will be done according to international agreements and MOU.

Medical play

In order to exercise medical procedures and handling of medical situations as a part of the overall operations, a medical play will be initiated by the DISTAFF. The medical play will focus on MEDEVAC.

Medical organisation during LIVEX for Medical play

BAS = Battalion Aid Station
Amb Team = 2 Ambulances
CSU = Casualty Staging Unit

7 Laundry

Will be arranged by SWEDINT and MKG after request.

8 Accommodation

SWEDINT and MKG will provide accommodation. SWEDINT will provide equipment for accommodation (tent) - if needed.

Firewood - for heating tents - will be provided by SWEDINT and MKG.

9 Immunities- taxation and duties

- a) As stipulated in the NATO PfP SOFA or in bilateral agreements.
- b) It is a national responsibility to bring a completed "Application/Declaration form" at the contingents arrival to the Swedish boarder (harbour or airport). The document has to be presented to the Custom authorities and signed. Each single vehicle must to have a "Triptyque". (Both forms are attached to this Appendix.)
- c) Central Joint Command will notify the Swedish Custom Authorities about estimated time of arrival and place of entry and departure.

Form 1: Application/Declaration form

Form 2: Triptyque

10 Economy

- a) Settlement procedures are given in the MOU, TA and in this EXOPORD.
- b) There is no limit to the amount of currency which may be brought into Sweden.
- c) All payment must be done in Swedish currency (SEK).
- d) All requests, which incurs costs, has to be signed by an authorised officer.
- e) A list of authorised officers from each unit should be sent to DISTAFF not later than 28 September.

11 Contracting

All contracting should be arranged through SWEDINT or MKG

.

TRANSPORT AND MOVEMENT

1 General

- a) This appendix covers a general description of transportation and movement during Nordic Peace 98. It also covers military deployment and re-deployment of participating units, teams and elements to the exercise.
- b) As a general rule, movement within the exercise area Betaland will be tactical. Safety will be the primary consideration when determining the method of movement. Swedish national traffic law and regulations will be enforced. English translation of this law can be requested from SWEDINT.
- c) For supplementary instructions, how to transport personnel on trucks, speed limits and traffic accident forms and procedures, see Annex O. Standard European accident form applies to participating units.
- d) Military Police units supported by Civilian Police will provide guidance to the units on traffic matters.

2 Transport and movement organisation

- a) The Finnish, Danish, Swedish and the Norwegian companies will use their own vehicles. All other military units will be equipped with Swedish military trucks including drivers at the arrival at Almnäs. The units will keep their vehicles during the whole exercise period at Almnäs and on Gotland.
- b) Concerning land transportation, SWEDINT and MKG will organise one TPC- Transport Central (MCC-Movement Control Center) at Almnäs and one TPC on Gotland. From these two TPCs it will be possible to request either transports or vehicles of various sizes/kinds (with or without drivers).
- c) All Sea and Air transports will be planned and handled by the DISTAFF.

3 Deployment and re-deployment

Details on the schedules for the deployment and re-deployment will be laid out in a separate order.

Deployment and re-deployment will be supported by the Transport and Movement Organisation of the Swedish Army. This will be described in a separate order from Central Joint Command.

- a) The Danish Company will move by road from Helsingborg to Almnäs 27 and 28 September 1998, with their own vehicles. The company will be met by a Swedish liaison officer on arrival to Helsingborg and will be escorted to Almnäs. The Danish company will detach terminal teams for the entry into Sweden and exit from Sweden. Re-deployment to Denmark will take place on 9 and 10 October 1998, with ordinary ferry from Visby harbour to Oskarshamn. The liaison officer will report to DISTAFF when the unit crosses the border to and from Sweden.
- b) The Norwegian Company will move by road to Almnäs 28 September 1998, with their own vehicles. The company will be met by a Swedish liaison officer on arrival to Hån and will be escorted to Almnäs. Re-deployment to Norway will take place on 10 October 1998 starting from Almnäs. The liaison officer will report to DISTAFF when the unit crosses the border to and from Sweden.
- c) The Finnish Company will be transported by a Finnish civilian cargo ship and arrive in Kappelskär harbour on 28 September 1998. The Company will be met by a Swedish liaison officer on arrival in the harbour, and will be escorted to Almnäs. Re-deployment to Finland will take place 9 October 1998 by a Finnish civilian cargo ship from Visby harbour. The Finnish company will report to DISTAFF when entering and leaving Swedish Territorial Waters.
- d) The Estonian unit will be transported by the Swedish Air Force from Tallinn to Nyköping / Skavsta airport 21 September 1998. SWEDINT will meet the unit at the airport and provide transport of the unit to Almnäs. The unit will re-deploy from Visby airport to Tallinn 9 October 1998 by the Swedish Air Force.
- e) The Latvian units will be transported by the Swedish Air Force from Riga to Nyköping / Skavsta airport 21 September 1998. SWEDINT will meet the unit at the airport and provide transport of the unit to Almnäs. The units will re-deploy from Visby airport to Riga 9 October 1998 by the Swedish Air Force.
- f) The Lithuanian unit will be transported by the Lithuanian Air Force from Kaunas to Nyköping / Skavsta airport 21 September 1998. SWEDINT will meet the unit at the airport and provide transport of the unit to Almnäs. The unit will re-deploy from Visby airport to Kaunas 9 October 1998 by the Lithuanian Air Force.
- g) The Swedish mech company will deploy by road from Strängnäs to Almnäs 28 September 1998, with their own vehicles. Re-deployment to Strängnäs will take place 9 October 1998 starting from Almnäs.
- h) The Swedish amphibious company will arrive in Södertälje harbour 28 September 1998. The company will be transported to Almnäs by SWEDINT. The company will re-deploy from Visby harbour 9 October 1998.

- i) The Danish mine hunter will arrive in Södertälje harbour 27 September 1998 and will depart from Visby harbour 9 October 1998.
- j) The three ships from the Swedish Coast Guard will arrive in Visby harbour 3 October 1998 and will depart from Visby harbour 9 October 1998.
- k) The Swedish mine hunter will arrive in Södertälje harbour 28 September 1998. The ship will depart from Visby harbour 9 October 1998.
- l) HSwMS Belos will arrive in Södertälje harbour 28 September 1998. The ship will depart from Visby harbour 9 October 1998.
- m) The Finnish fast attack craft Porvoo will arrive in Södertälje harbour 28 September 1998. The ship will depart from Visby harbour 9 October 1998.
- n) The Lithuanian patrol ship P-31 Dzukas will arrive in Södertälje harbour 28 September 1998. The ship will depart from Visby harbour 9 October 1998.

4 Transport and movement to and from LIVEX (Phase 4)

These movements will be co-ordinated in a separate order by the DISTAFF.

5 Transport and movement within the LIVEX area

a) LAND MOVEMENTS

1. Company commanders are responsible for planning, monitoring and controlling all movements within their areas and for ensuring adherence to all traffic regulations.

2. MKG is responsible for arranging road and bridge clearance for heavy / wide vehicles according to agreements. All public bridges with restrictions in the LIVEX area will be marked with classification signs by HNS. Bridges without signs have clearance for all heavy / wide vehicles.

b) TRAFFIC REGULATIONS

Regulations and information of speed limits, road conditions, use of lights, priority vehicles (emergency) and traffic control will be issued by the DISTAFF.

c) TRAFFIC ACCIDENTS

1. All traffic accidents are to be reported to the DISTAFF immediately. Standard European accident form is to be forwarded to the DISTAFF within 6 hours.
2. It's a national responsibility that all units and groups are to ensure that drivers are briefed on the actions to be taken in the event of an accident.

HYGIENE AND VETERINARY SUPPORT

1 General

Hygiene is primarily a commanders responsibility.

Participating forces are to take necessary measures to maintain a proper standard of hygiene. This includes personal, kitchen and unit hygiene. Although and because the exercise is carried out in a relatively clean environment, high hygiene standard could be kept.

Host Nation will provide Hygiene and Veterinary support. This Hygiene and Veterinary support includes:

- Food hygiene,
- Drinking water hygiene,
- Field sanitation,
- Waste disposal and waste collection,
- Environmental protection / hygienic aspects,
- Import regulations regarding agricultural products,
- Shower facilities in barracks.

2 Import regulations

a) According to the Swedish law it is prohibited to import the following items to Sweden:

- Live animals,
- Meat and meat products, including horn meal, bone meal, blood serum or plasma,
- Fresh and dried milk, and milk products,
- Potatoes, vegetables, all grass products, plants, peat and soil,
- Fruit, soft fruit and berries,
- Eggs,
- Honey in fresh, dried or other preserved form,

b) Exceptions from these rules exists. Most canned food and beverages, heat treated vacuum packed food and beverages and processed foods produced in Finland, Norway, Denmark and Iceland may be imported.

c) If the units intend to bring working dogs, this should be co-ordinated and cleared through Veterinarian authorities. Medical Section, HQ CJC, will assist to obtain the right contacts.

3 Control of Hygienic and Field Sanitation Standards

The inspection of Hygiene and Field Sanitation is a responsibility of the Host Nation. This includes control of food and drinking water.

4 Drinking Water

All drinking water will be provided by HNS.

5 Waste

- a) Units are responsible for taking care of all kind of waste in a proper way.
- b) All garbage is to be collected in plastic bags and brought to designated waste disposal or collection points. Under no circumstances garbage is to be left on the ground or buried in the terrain. Garbage bags will be provided by HNS, from SWEDINT and MKG.

6 Human Waste

- a) Human waste shall be kept strictly separated from other kind of waste. Latrine bags are to be closed properly and transported to designated human waste disposal or collection points. These routines and locations will be regulated in UNMIB MF and Battalion OPORDER.
- b) Latrine discipline is the responsibility of the Unit Commander and shall be strictly complied with. Dug-in latrines are prohibited.
- c) Cardboard box latrines and biodegradable bags are to be used and will be distributed by SWEDINT and MKG.

7 Battery waste

Battery waste must be collected in separate cans or boxes, and marked as "Used Batteries", which will be distributed by HNS-units.

8 Medical waste

Garbage contaminated by blood, secretions or infected material is to be packed in waterproof bags and clearly marked with yellow tape or tag (distributed by HNS-units). Sharp objects (glass, scalpels, needles, etc) are to be packed in plastic cans, marked and brought to nearest stationary medical facility.

9 Environmental Protection

a) General precautions:

Efforts should be taken to avoid harm to domestic and wild animals. Tins, bottles, glass pieces, plastic, trip wires, string used ammunition etc should not be left.

b) Drinking water reservoirs:

Some lakes and rivers are water supply and water outlet for public water works. These are restricted areas and marked with red dashes and a "V" on manoeuvre maps. Bivouacking and use of vehicles and helicopters is prohibited closer than 200 meters from such areas. Measures should be taken to avoid pollution in such areas. Pollution of fresh water, lakes and streams is absolutely prohibited.

10 POL-Waste

All POL-waste must be collected and delivered at fixed military installations.

PERSONNEL

1 Participants

An alphabetical list of all personnel participating in the exercise is to be sent to CJC (the Personnel Section) SE-645 84 Strängnäs, Sweden by all units and groups prior to 1 September 1998. The following details are requested:

- rank / title,
- surname,
- family name,
- unit / organisation.

For all Swedish participants name, address and telephone number of next of kin is also required.

All foreign senior officers are expected to have access to the same information about their contingent members in case of an accident.

ID-cards will be issued to all participating personell during the first week.

2 Postal Service

- a) The postal plan for participating units see Annex K.
- b) Addresses for the different units / organisations and personnell will be as follows:

Rank / title
Name
Nordic Peace 98 / *Home country unit*
SE -173 99 TOMTEBODA
Sweden

3 Law of war

Principles and rules of international treaties (the Geneva conventions) are to be respected. Commanders on all levels are responsible to prevent, and when necessary, suppress breaches on these principles and rules.

4 Narcotic stimulants

In accordance with Swedish law all forms of owning and use of narcotic stimulants is illegal. Swedish authorities will conduct checks and surveillance to ensure that these regulations are being adhered to. All suspected violations of regulations will be investigated by the Swedish police, customs and military authorities.

5 Consumption of alcohol in Swedish military camps

In order to comply with standard Swedish military practices the sale and consumption of alcohol is not allowed in Swedish camps and training areas. By Swedish military law all civilian rented camps or area used by military units, are to be regarded as military camps.

Alcoholic beverages is only to be consumed in properly organised facilities (messes/canteens or other military organised facilities) according to local regulations and authorised by CINC CJC.

6 Briefing of participating personnel prior to the exercise

Prior to the commencement of the exercise participating personnel will be briefed by unit leader (GO/NGO) and company commander (military organisation) on the exercise safety regulations. (Annex O)

7 Personnel reporting

All participating forces and organisations will report personnel situation during the exercise referring to SOP and annex R .

DAMAGE CONTROL**1 Damage to civilian property (not traffic accidents)**

- a) Each company will appoint a Damage Control Officer as a point of contact with DISTAFF.
- b) The responsibility of the Damage Control Officer is to register and report damage to civilian property to the DISTAFF.

2 Registration and reporting of damages and/or repairs

- a) All bivouac areas and long term positions are to be recorded and plotted on to a map.
- b) When damage has been done the owner is to be contacted. A damage report is to be filled and signed by the Damage Control Officer.
- c) When damage has been done, but has been repaired by the unit, the report is to be filled and signed by the Damage Control Officer.
- d) The damage report is to include details indicated below:

- fences, type, total length in meters, number of poles and length in meters of wire damaged,

- roads, type, number of meters, how damaged (wheel tracks, edges, subtrains). Road condition prior to the damage should always be stated if possible,

- conifer forest, number of trees, average height,

- deciduous forest, estimated number and dimensions of the damaged area,

- cultivated ground / cultivated pasture, dimensions of damaged ground, wheel tracks or other,

- e) the Damage Report form is to be completed during the investigation and distributed as follows:

- to the DISTAFF as soon as possible through LCC, MCC HQ,
- retrained by the unit,
- to the local civilian(s) involved,
- to LCC, MCC HQ,

f) all contact with property owners should be carried out in the presence of a representative of the Swedish Armed Forces.

3 Clearing up and repair

In general, damaged property should be repaired as soon as possible by those who caused the damage. In the event of minor damages to civilian property, the land owner and the military unit involved can agree on immediate repair and clearing up of the area. Cut down branches and trees should be collected and piled and rubbish removed. Costs for damages are stated in Technical Arrangement.

ENGINEERING and TOPOGRAPHIC ENGINEERING

This annex outlines the aim, support and requirements for Engineering and Topographic Engineering during the exercise.

The Engineering appendix covers aspects of the whole engineering plan for all participating units, not just parts that pertain to engineer units. This appendix has to be compared to aim and events lists in other appendices.

The Topographic Engineering appendix covers the production, requirements and distribution of geographic information.

Tab A. Engineering

Tab B. Topographic Engineering

Engineering

a) Units

EOD- unit (SE)

Mine clearing personal (equipment) in units from participating countries.

Mine action cells will be set up in the Joint Staff in the Land- and Maritime component staffs.

b) Mobility

Mine awareness

Aim

The aim is to give all participants such knowledge, understanding and attitude that they can act according to the mine threat.

Objectives

- All participants shall be able to identify and recognize mines in a minefield based on some basic facts and information, and report the information through the chain of command.
- Act correct if caught in a minefield.
- By a demonstration give the participants an understanding of the danger mines represent.

Exercises

SWEDINT supported by Swedish Demining Centre (SWEDEC) is responsible for all exercises during the preparation phase at Almnäs.

- Mine awareness with all units (education and exercises).
- Exercises with the Mine clearing (EOD) unit.
- Demonstration of mine clearing.

SWEDEC is responsible for the planning of all land exercises in Betaland.

- Mine awareness for locals NGO's and GO's.
- Mine survey (all units).
- Exercises with the EOD-unit and land units in mine-clearing for own and humanitarian tasks.
- Mine accidents.
- Mine reports.

Tasks for mine action cells

- Give information of (mine awareness) type of mines, markings, dangerous areas. cleared areas, roads etc.
- Registration of minefields.
- Reports.
- Control EOD-, mineclearing units and survey teams.

c) General engineering

SWEDINT is responsible for all needs of equipment for building up Observation Posts (OPs) etc for the exercise during the training phase.

MKG is responsible for building up OPs, checkpoints (CPs), border lines, refugee camps etc before the exercises in Betaland. Necessary requirements of equipment for the units exercises will be ordered by SWEDEC and the Land component staff.

Topographic Engineering

Topographic maps will be distributed in Almnäs. Responsible for distribution is HNS Almnäs.

The maps are to be picked up by member from each unit in the beginning of w 840. Time and place is to be announced by SWEDINT.

The maps will be prepacked and marked with unit names according to following tables.

J-section/Unit with requirements of *special maps* have to produce them itself by using/bringing own equipment.

Land maps

Units	1:250 000	1:50 000 (UTM)	Military Road Atlas	Transportation map 1:1000 000
Land Component Staff	5	20	10	10
BALTCOY	5	20	5	10
DANCOY	5	20	5	10
DK naval unit	5	5	5	10
FINCOY	10	30	5	10
NORCOY	5	40	5	10
SE MP-COY	5	30	5	10
UNHCR	5	10	5	10
Save the Children	5	10	5	10
Red Cross	5	10	5	10
PIC	25	50	5	10
VOB	25	50	5	10
SCAA (hkp)		10	3	5
SE flyg (tp)		10	2	5
Reserve	45	135	20	20
SUMS:	150	450	90	150

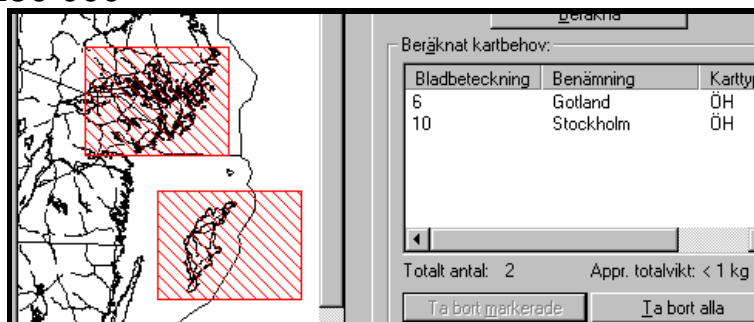
Naval charts

Units	1:25 000 nr 6181 Södertälje	1:25 000 nr 6172 Landsort	1:25 000 nr 6171 Nynäshamn	1:120 000 nr 731 Norra Gotland
LT	5	5	5	5
DK	5	5	5	5
FINCOY				5
FI naval ship	5	5	5	5
SE MP-COY	30		30	15
PIC	5	5	5	5
VOB	5	5	5	5
Reserve	25	25	25	25
SUM TOTAL:	80	50	80	70

Air maps

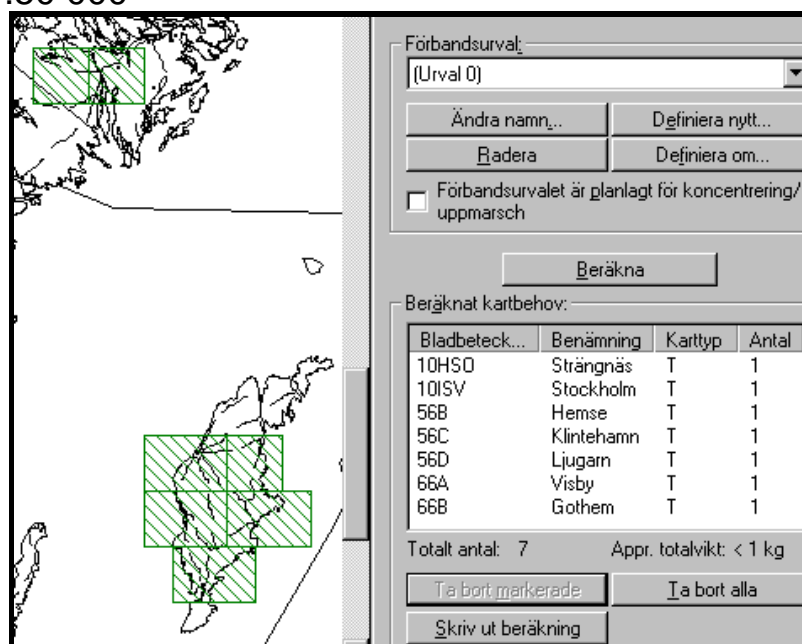
Unit	Scale / Type		
	FM flygkarta 1:500 000 (4 sheets covering Sweden)	FV flygkarta 1:250 000 One sheet: LINKÖPING (does unfor- tunately not in- clude the south part of Gotland)	(=Land map) 1:100 000 Two sheets: 56 Södra Gotland 66 Norra Gotland
LT Air unit (hkp)	5	5	5
PIC	5	5	5
VOB	5	5	5
SCAA	5	5	
SE Flyg (C130)	5	5	
Reserve	25	25	15
SUMS TOTAL:	50	50	30

Land map 1:250 000



Note: New sheetnames in the latest edition: 19 Visby and 13 Stockholm

Land map 1:50 000



NB: The specific swedish land map 1:100 000 will not be used by land components as it differs from international standards.